



ELAN Driver Manual

©2018 LENBROOK INDUSTRIES LIMITED

All rights reserved.

No part of this publication may be reproduced, stored or transmitted in any form without the written permission of Lenbrook Industries Limited. While every effort has made to ensure the contents are accurate at the time of publication, features and specifications may be subject to change without prior notice.

Revision History			
Version	Date(mm/dd/yy)	Author	Description
1.0.0	04/02/2018	Remi P.	Initial release.
1.1.0	08/30/2018	Remi P.	Added installation note for CI580. Updated sect 3.4 to add "Save Queue". Updated known issues.

Table of Contents

1.0 Introduction	4
2.0 Installation	5
2.1 Copy Drivers To The Right Location.....	5
2.2 Install Media Renderer Driver	5
2.3 Installing BluOS Zone Controller Driver	7
2.4 Assign Source To Zone Controller Driver	9
2.5 Update Driver.....	9
3.0 Using the Driver	10
3.1 Launching BluOS ELAN Driver	10
3.2 Now Playing.....	10
3.3 Presets	11
3.4 Play Queue	11
3.5 Services	12
3.6 Search	12
3.7 Volume Control.....	12
4.0 Support	13
5.0 Known Issues	14

1.0 Introduction

This document describes how to install, configure and use the BluOS ELAN Zone Controller driver and Media Renderer driver. The driver suite was created for the ELAN gSC2 and gSC10 controllers. It has built in sources Streaming, Analog Input, Optical Input, and Bluetooth.

The driver suite supports all BluOS players. The driver suite v1.0.0 provides functionality for now playing, transport control, volume control, presets, play queue, service browsing, and service search. The Zone Controller driver provides volume controls. The Media Renderer driver works as a source to the Zone Controller driver, providing metadata browsing, service browsing, service search, and transport control.

This driver suite requires g!Tools version 7.3.77.0. It requires ELAN Controller firmware 8.2.650.0 or higher. The driver supports the latest BluOS firmware.

2.0 Installation

Ensure that your players are running the latest version of BluOS firmware. The driver suite has to be manually installed and configured with the right IP address.

Note: for CI580, treat each node of CI580 as an independent player. Each node has the same IP but different ports (11000, 11010, 11020, and 11030 respectively for node 1, 2, 3, and 4).

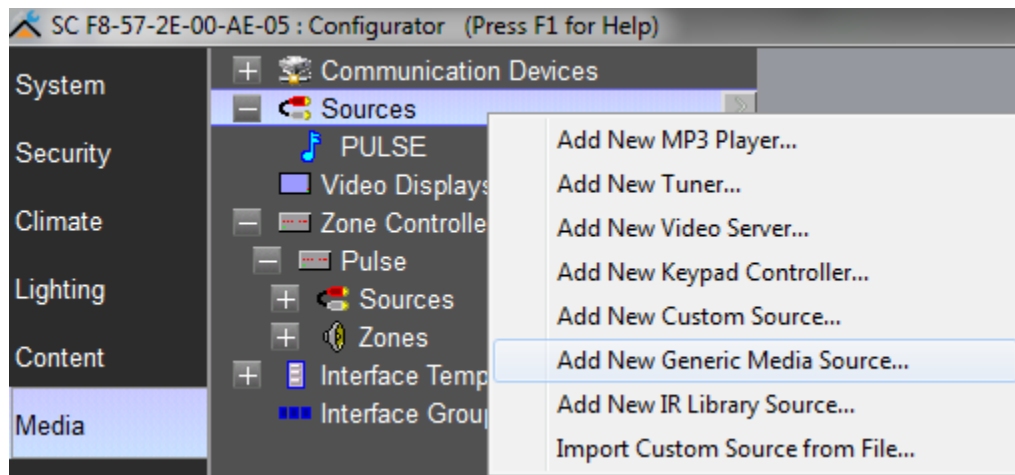
2.1 Copy Drivers To The Right Location

The default folder that the Configurator looks for drivers is set up at the very first time of your using Configurator. Usually you need a customized folder to keep all Elan drivers in. The first time you add a driver, click “Search Folder...” and navigate to the customized folder. After that, every Controller you log into from the same PC will look to that folder for drivers. But you can always navigate to other customized folder that the drivers are in by clicking “Search Folder...” and navigate to it when adding a driver from other customized folders.

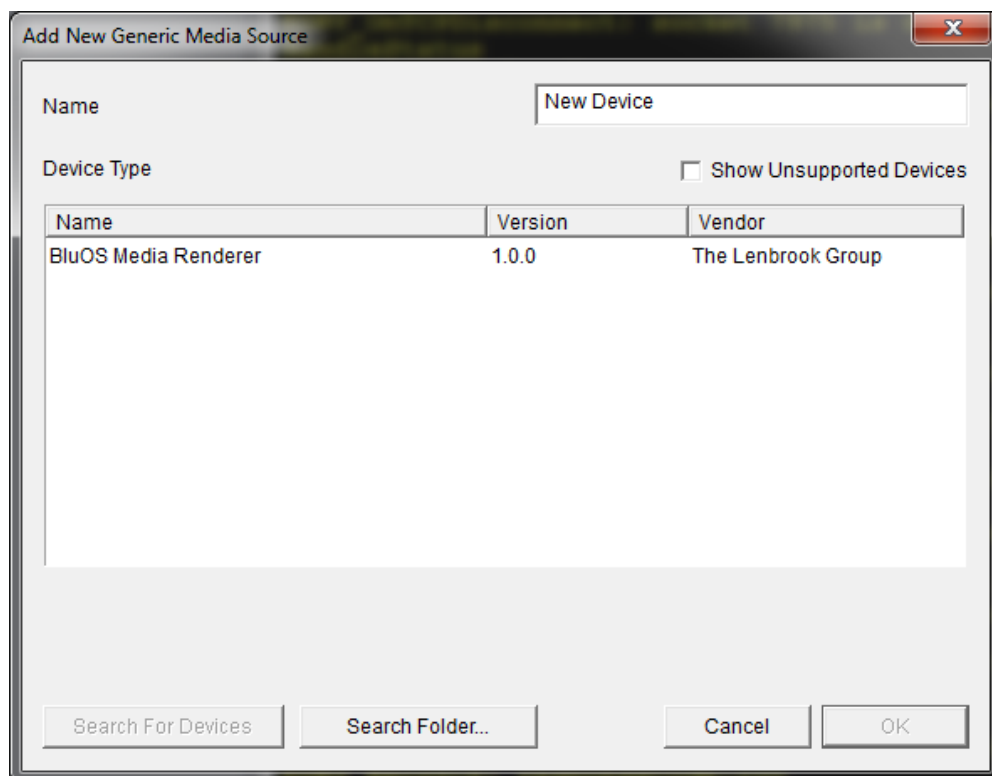
Copy the drivers to your PC either to the first-time setup folder or a new customized folder.

2.2 Install Media Renderer Driver

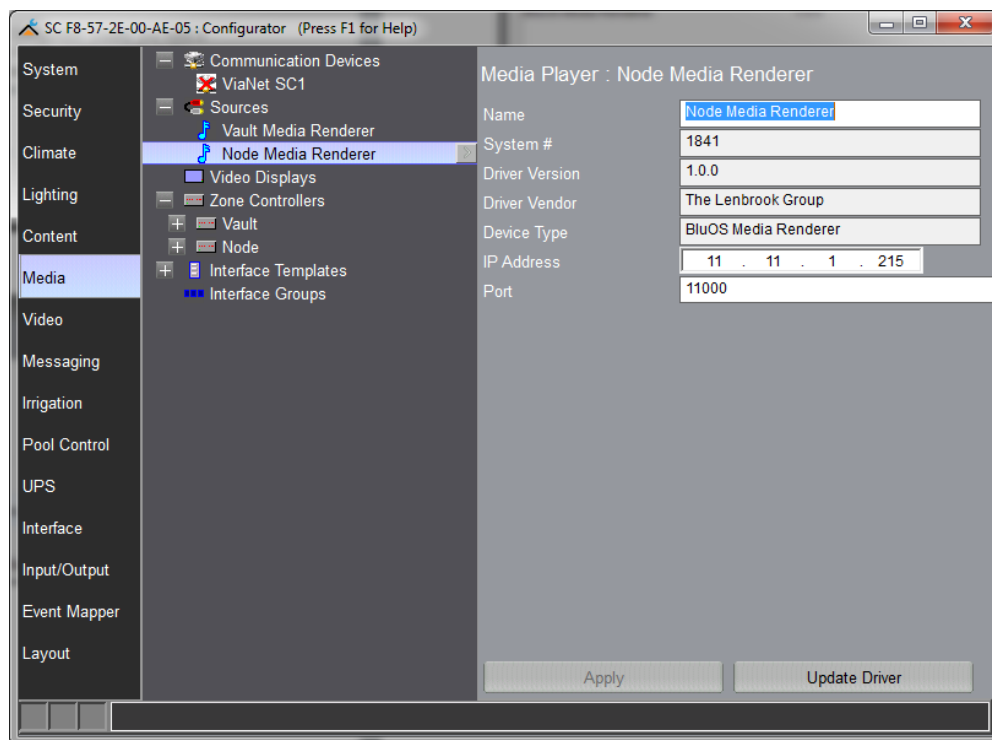
In gConfigurator “Media”, right click on “Source” to “Add New Generic Media Source”.



Select BluOS_MEDIA_RENDERER and click on “OK”

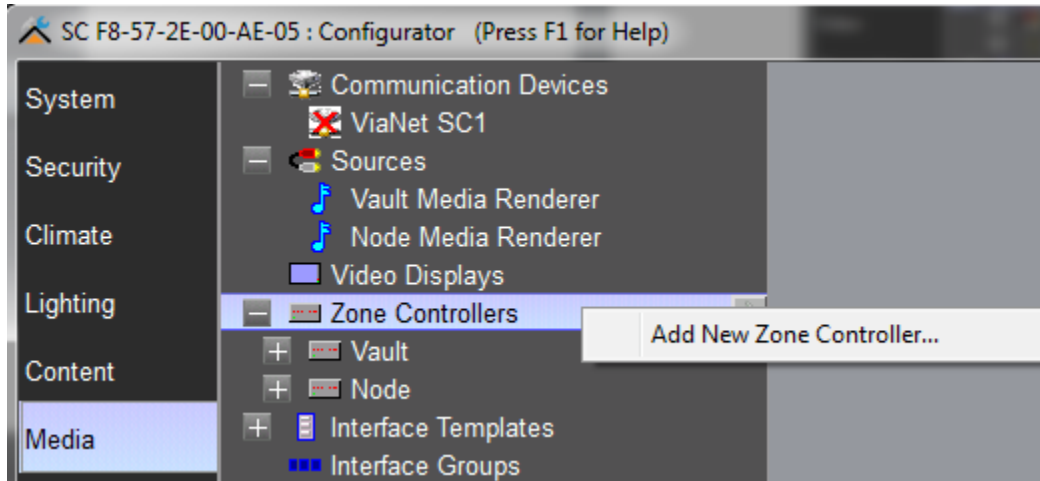


Configure Name, IP, and Port (default 111000), and click on “Apply”.

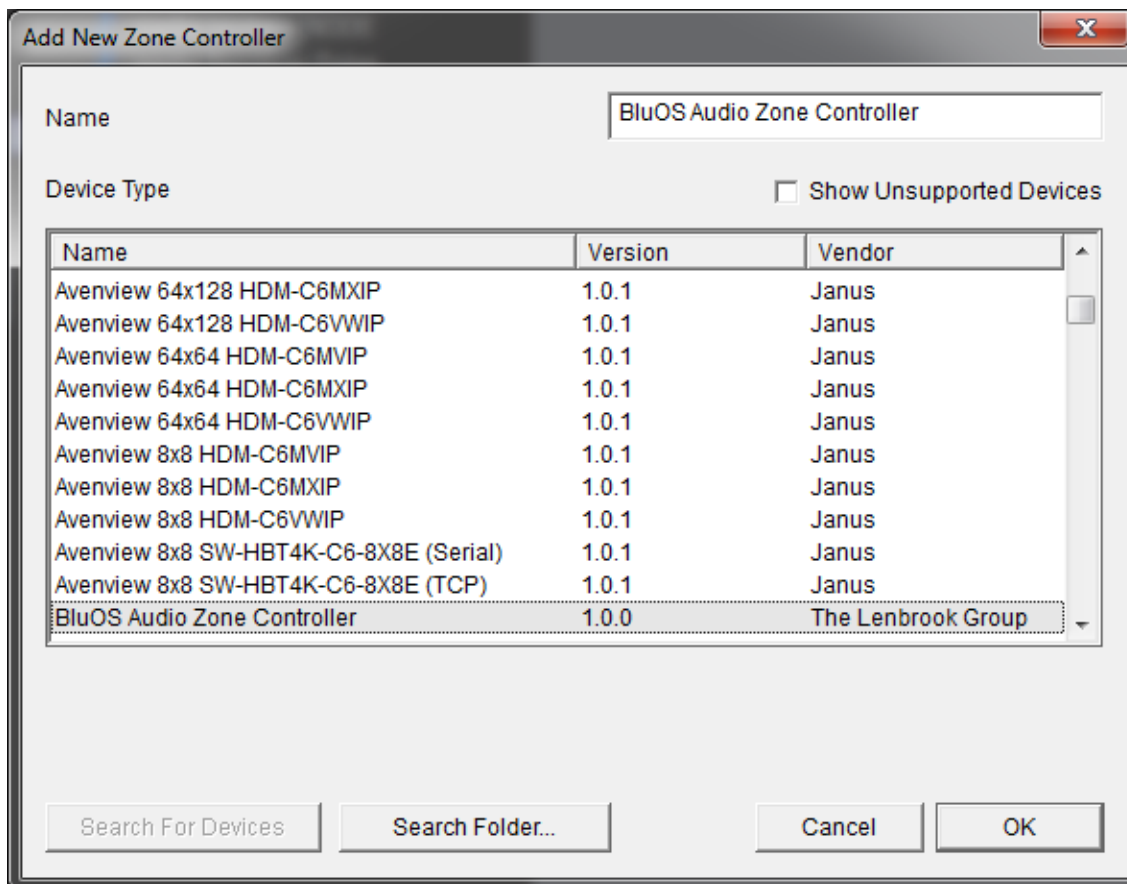


2.3 Installing BluOS Zone Controller Driver

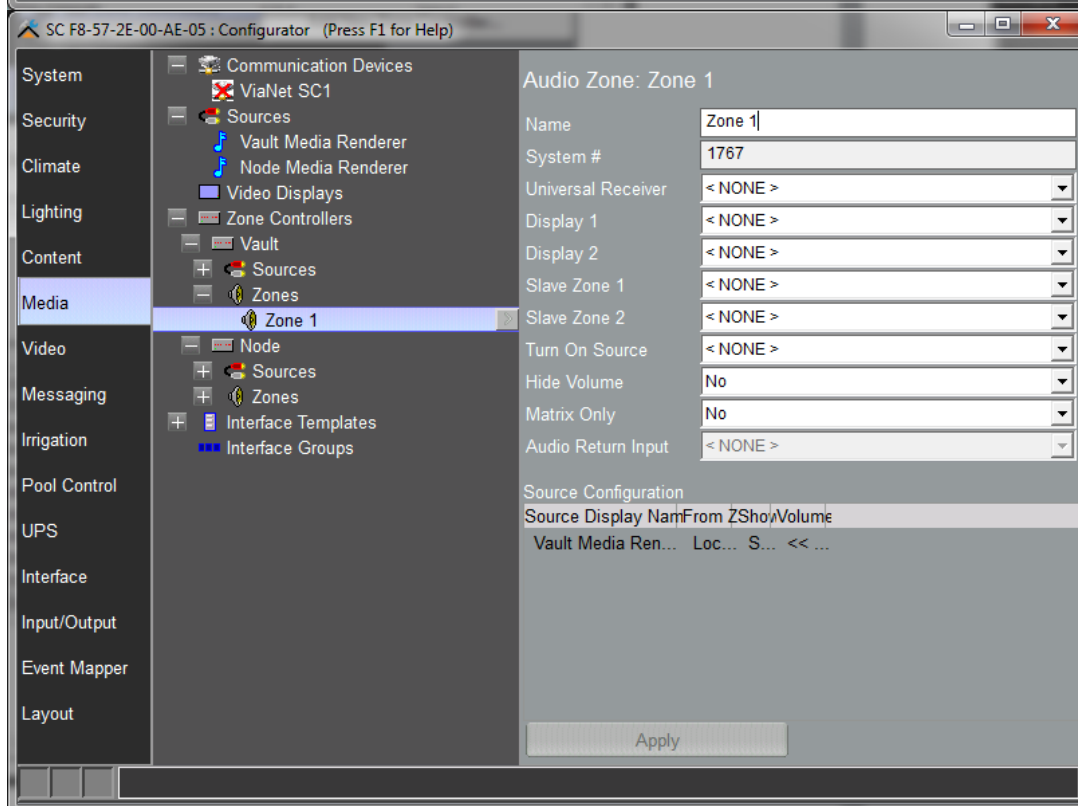
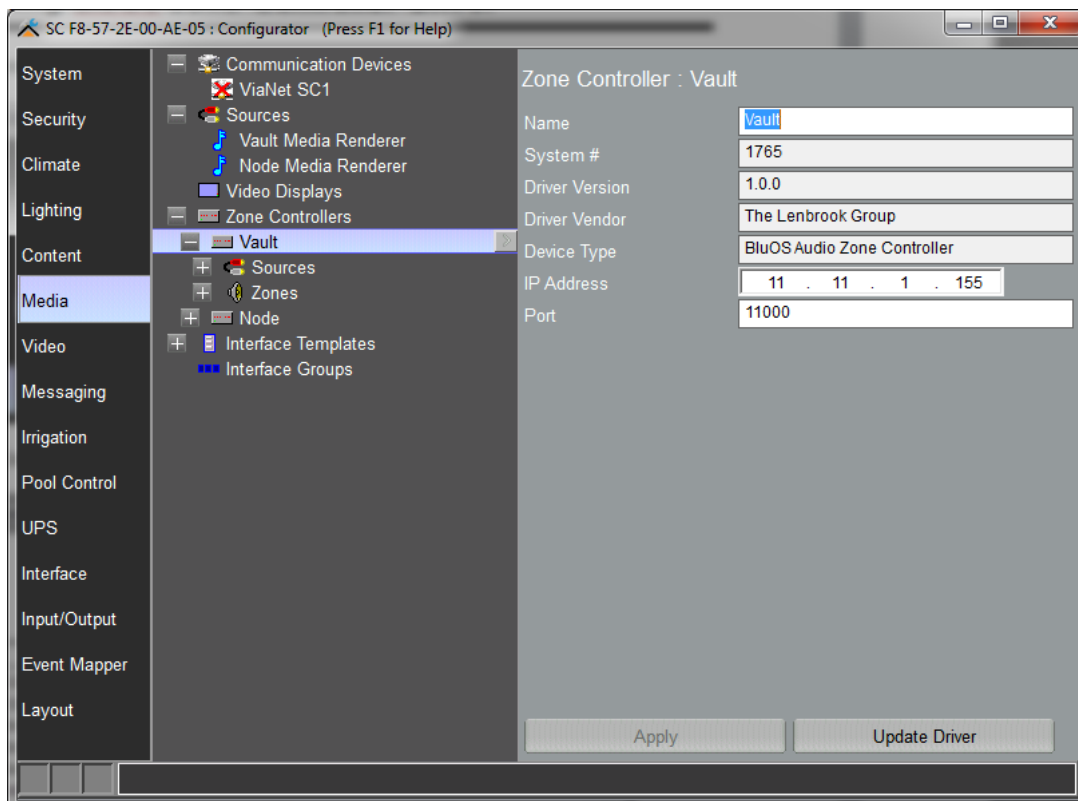
In g!Configurator “Media”, right click on “Zone Controllers” to “Add New Zone Controller”.



Find “BluOS Audio Zone Controller” to add the driver.

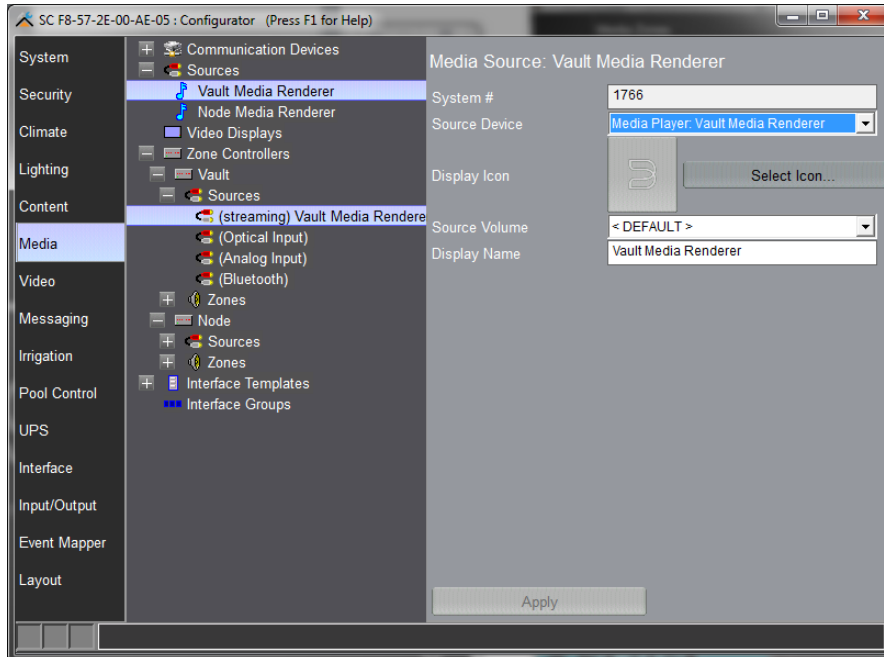


Configure the “Name” and “IP Address” for Zone Controller, and “Name” for Audio Zone as needed. Then save the changes.



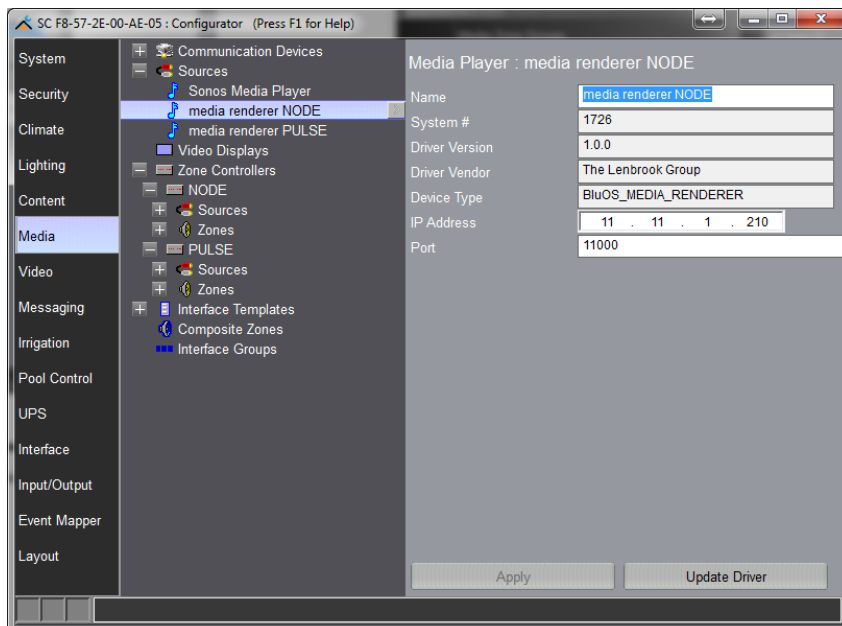
2.4 Assign Source To Zone Controller Driver

One Zone Controller driver needs one Media Renderer source. Select the right Source Device for Zone Controller driver source.



2.5 Update Driver

Select media renderer driver and click on "Update Driver". Select zone controller driver and click on "Update Driver". Only one update for one "type" of driver is necessary.

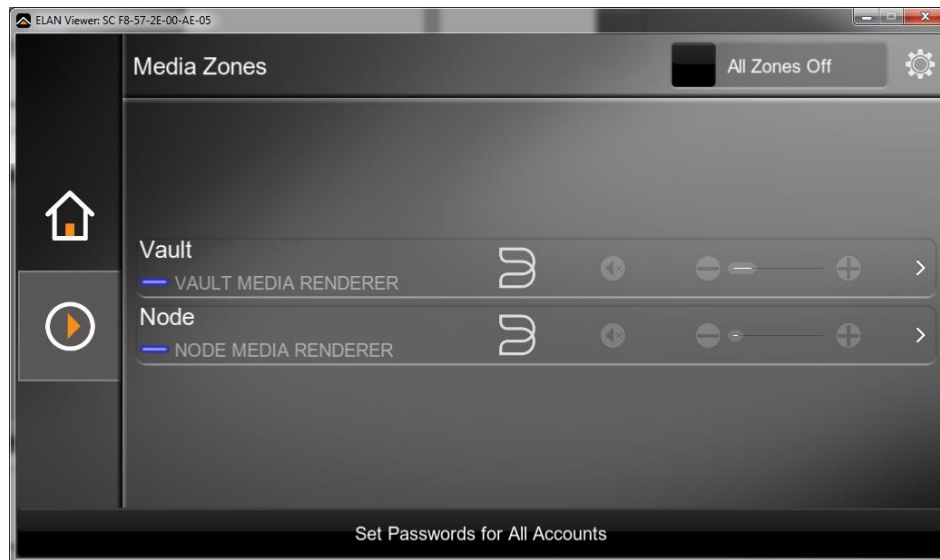


3.0 Using the Driver

The current driver version 1.0.0 provides now playing, presets, play queue, service browsing and searching.

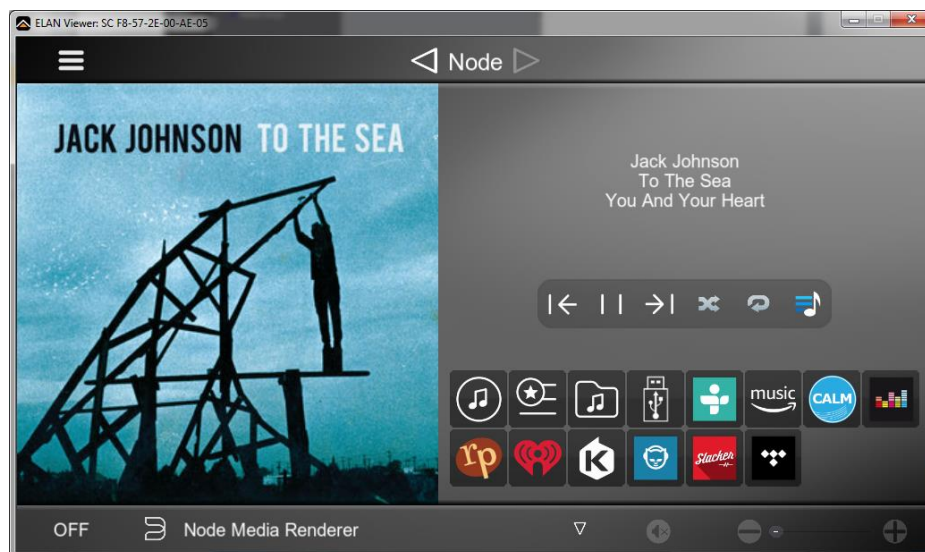
3.1 Launching BluOS ELAN Driver

Launch g!Viewer or ELAN mobile app. Click “Media” to see all the players installed.



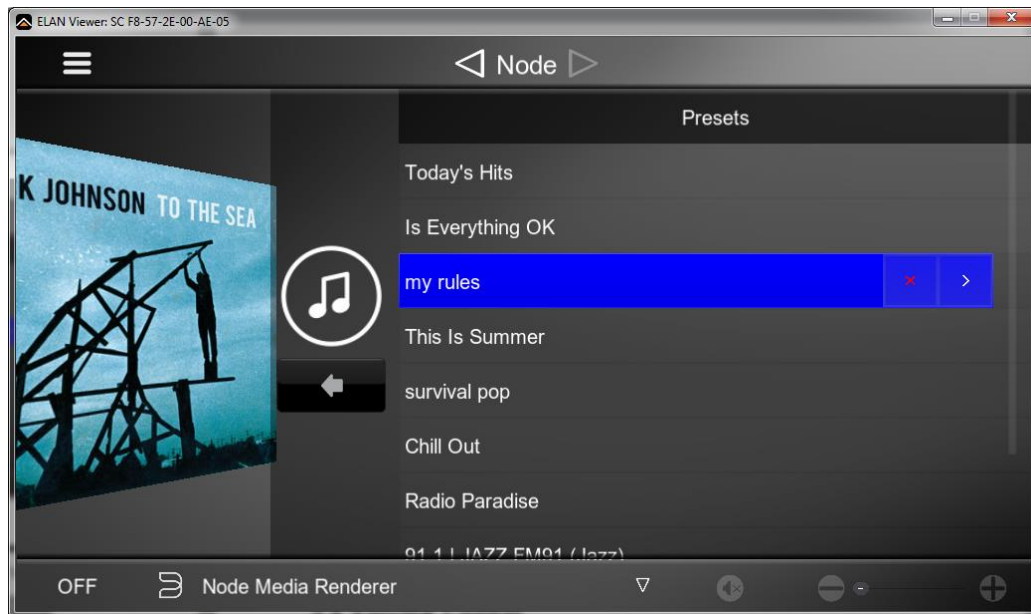
3.2 Now Playing

Click on any of the BluOS players to enter Now Playing page. It has fully supported transport control. Due to ELAN system limit, up to 14 services are supported (including Presets, Playlists, Library, USB, Optical Input, etc.)



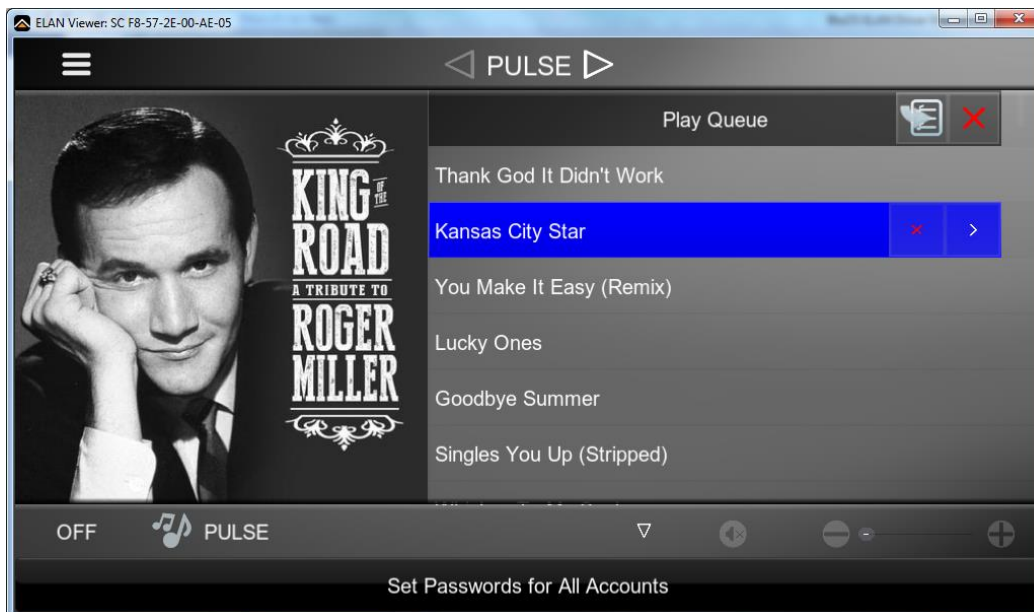
3.3 Presets

Click on “Presets” icon (the first one) will bring up presets list. Each preset has “load” and “delete” actions.



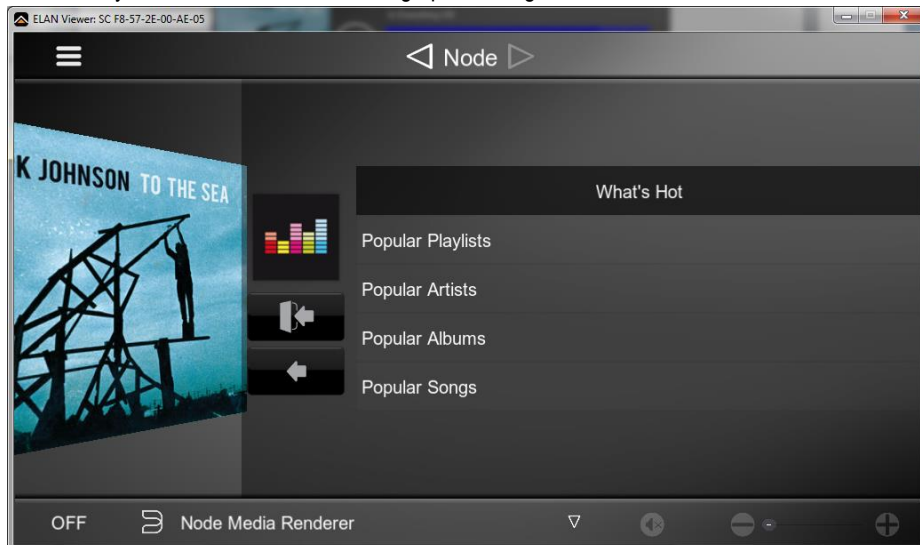
3.4 Play Queue

Click on the right most icon next to transport control keys will bring up play queue. Each track has “Play” and “Delete” actions. And queue has “Save Queue” icon on top right to save the queue.



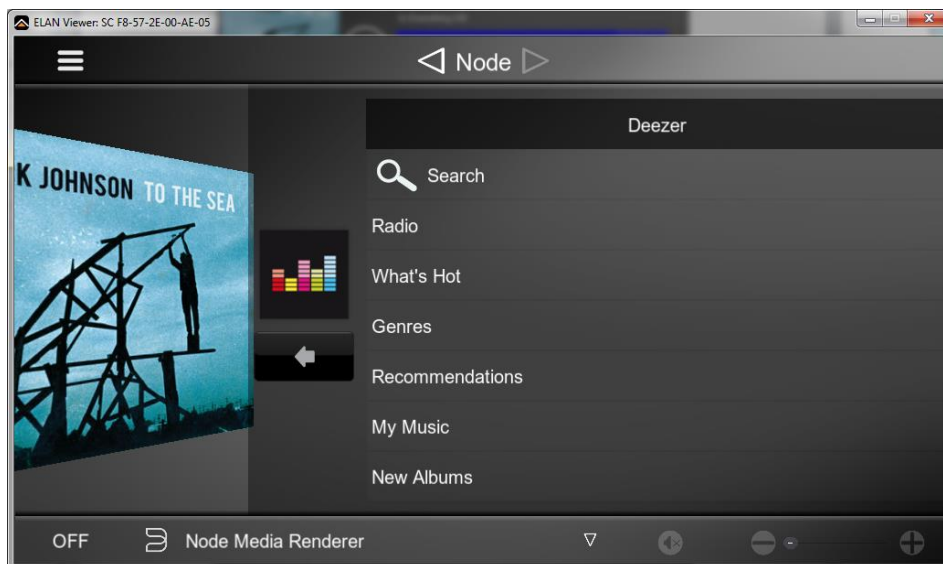
3.5 Services

Click on any music service icons will bring up browsing screen.



3.6 Search

If a music service has search functionality available, you can click on “Search” on the first page of the music service to do the search.



3.7 Volume Control

Click on “+”, “-”, and “mute” button at the bottom can control player volume.

4.0 Support

For technical support issues, contact BluOS technical support at <http://support.bluos.net> or email support@bluos.net.

5.0 Known Issues

The following issues are known to exist.

Driver Version	Issue	Workaround
1.1.0	Album art with "https" url is not supported yet by Elan.	None.
All	Both Repeat and Repeat Once are treated as Repeat.	None. Elan only supports two states.
All	Deleting multiple tracks from queue may not update the queue properly.	Leave the queue page and return to the queue page again.
All	Grouping feature is not supported yet.	None.