

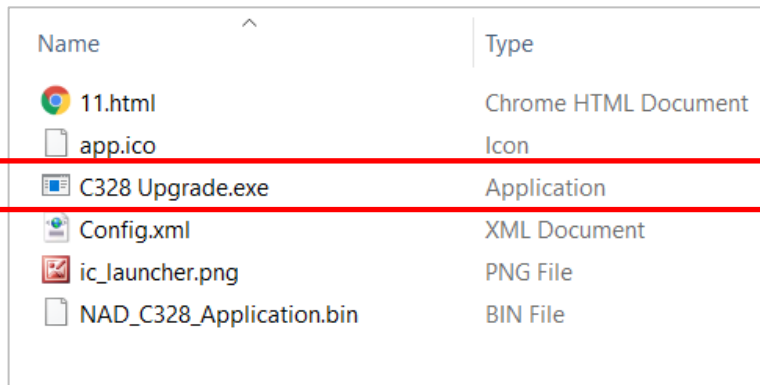


SOFTWARE UPGRADE PROCEDURE

MODEL NUMBER	C328
REFERENCE NUMBER	TD2019-14-C328
DATE	19 January 2019

C328 SOFTWARE UPGRADE PROCEDURE

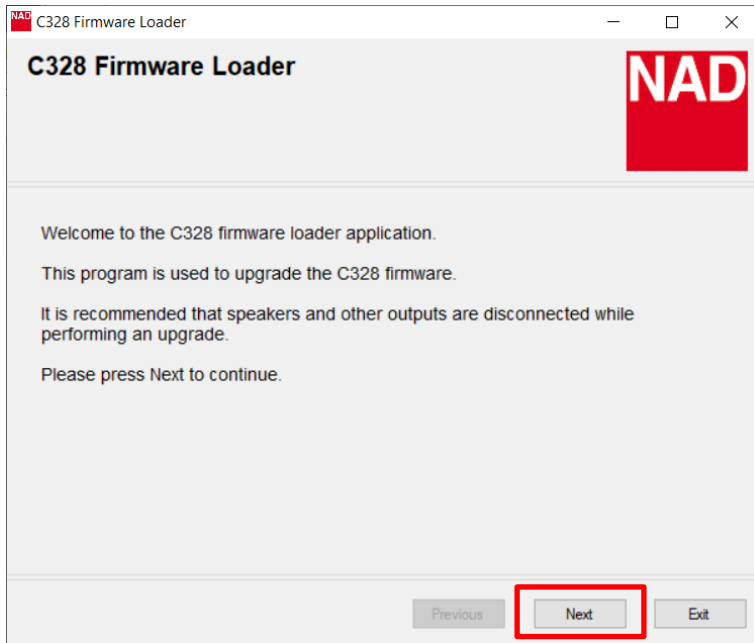
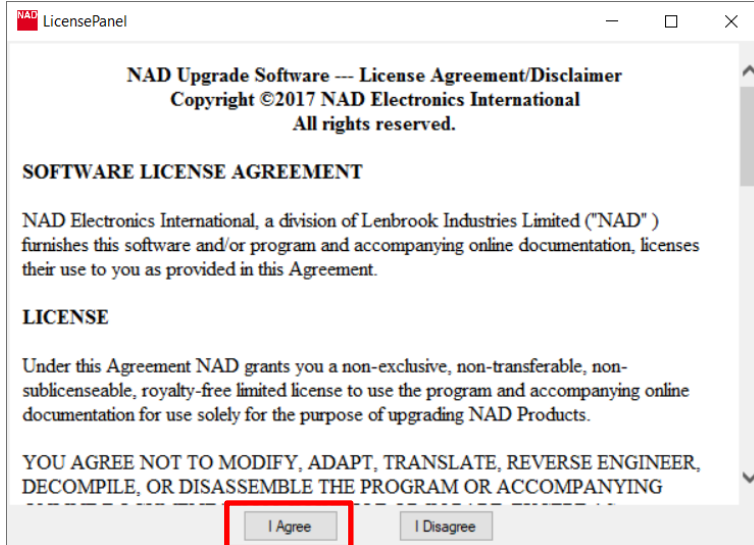
- 1 Connect your computer to C328's RS232 port using a RS232 serial cable or USB-to-RS232 cable.
- 2 With the supplied power cord connected to C328's AC Mains input, plug-in the power cord of C328 to a corresponding mains power source.
- 3 Switch ON the rear panel Power switch and then press the front panel Standby button to power up the unit from standby to operating mode.
- 4 Download the latest C328 software upgrade file from the C328 product page at nadelectronics.com. The software is downloaded as a zip file.
- 5 Save the software upgrade zip file to your "My Documents" or "Desktop". Remember the file's location.
- 6 Unzip the file. Extract and save all the contents of the unzipped file to a new folder.
- 7 From the folder, double click "C328 Upgrade.exe". Follow and select the highlighted items below.





SOFTWARE UPGRADE PROCEDURE

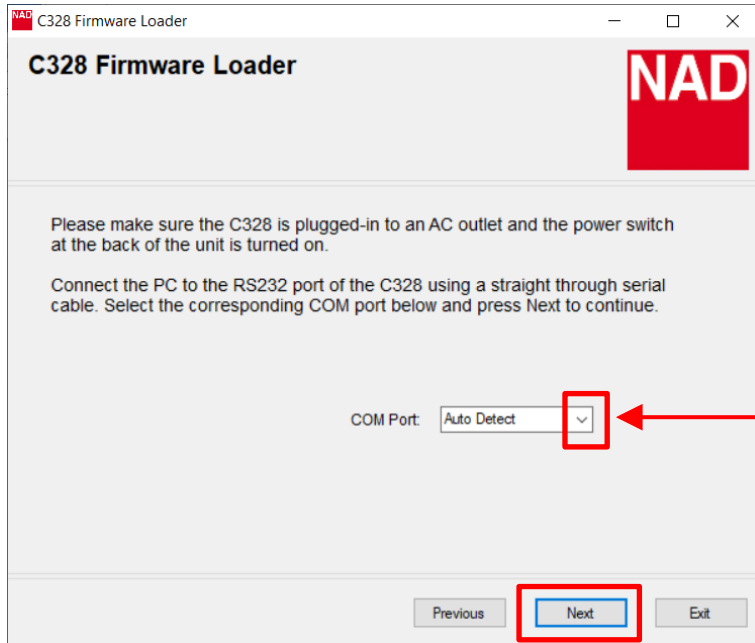
MODEL NUMBER	C328
REFERENCE NUMBER	TD2019-14-C328
DATE	19 January 2019



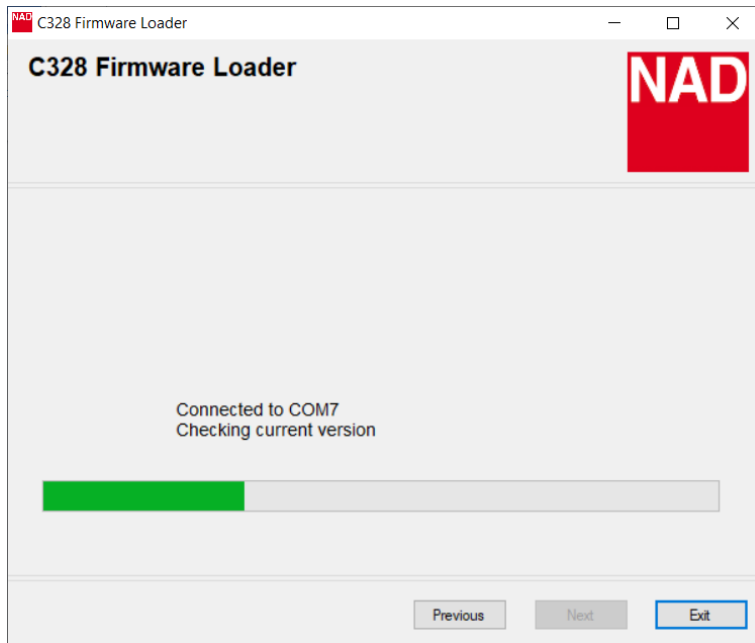


SOFTWARE UPGRADE PROCEDURE

MODEL NUMBER	C328
REFERENCE NUMBER	TD2019-14-C328
DATE	19 January 2019



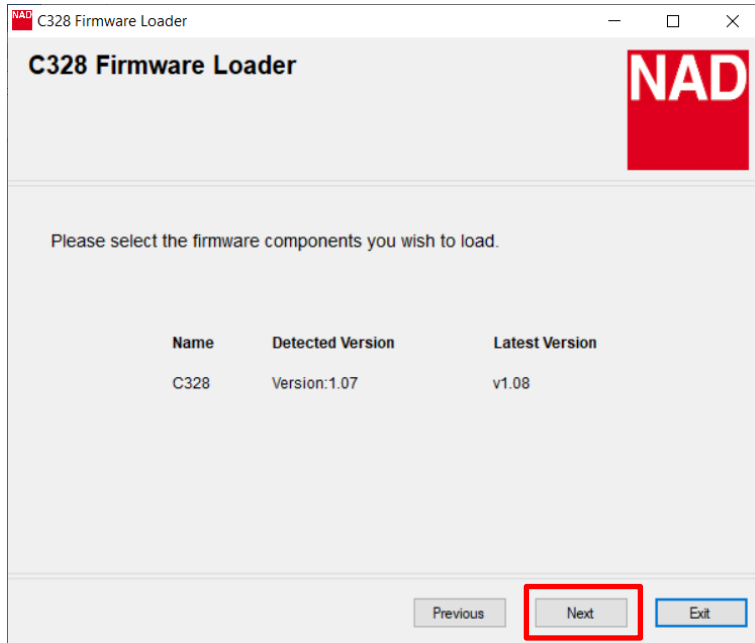
Select from the drop down "COM Port" tab the corresponding COM port where the serial cable is connected/interfaced.





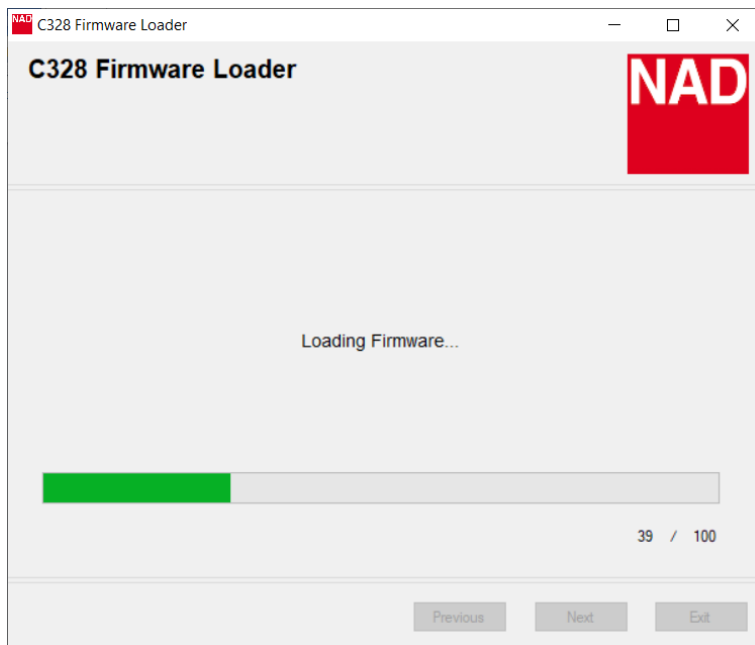
SOFTWARE UPGRADE PROCEDURE

MODEL NUMBER	C328
REFERENCE NUMBER	TD2019-14-C328
DATE	19 January 2019



The Detected and Latest firmware version details shown are for reference only.

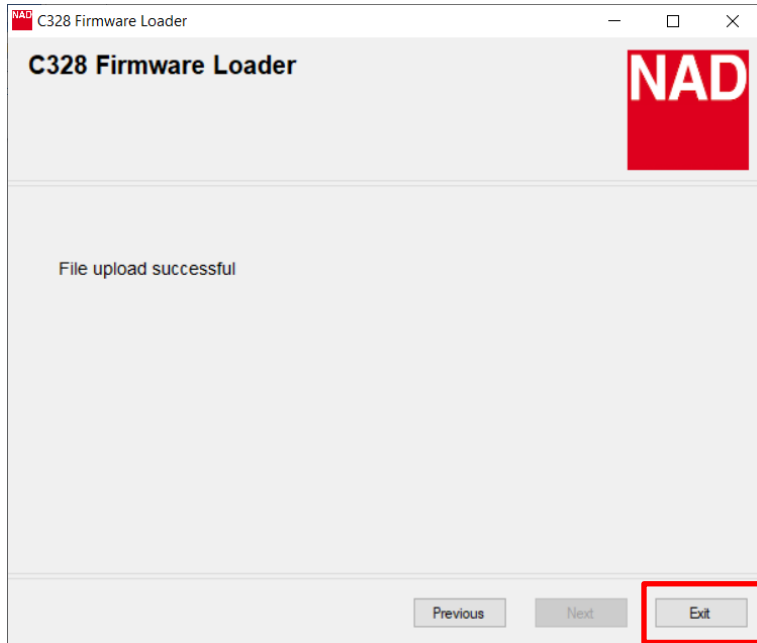
If the Latest Version is higher than the Detected Version, select "**Next**" to proceed with software upgrade.





SOFTWARE UPGRADE PROCEDURE

MODEL NUMBER	C328
REFERENCE NUMBER	TD2019-14-C328
DATE	19 January 2019



HOW TO CONFIRM SOFTWARE NUMBER DETAILS

Press and hold front panel buttons [**< SOURCE**] until the display shows the software number details.

HOW TO RESTORE THE C328 TO ITS FACTORY DEFAULT SETTINGS

Press and hold front panel buttons [**SOURCE >**] until the display shows "C3".